



One-stop solution for CLEANROOM and disposable Products

Product Catalogue

Great Utopian Sdn Bhd

Hotline: +607-287-2282

Email: sales@supplyguru.com.my

Website: www.supplyguru.com.my

**No 3418, Jalan Pekeliling Tanjung 27/1,
Kawasan Perindustrian Indahpura, 81000,
Kulai, Johor**

Singapore | Johor | Melaka | Penang | Kuala Lumpur | Thailand

Content Overview

Disposable Gloves	Pg 2
ESD Shoes	Pg 3
Cleanroom Apparels	Pg 4
Cleanroom Apparel Design	Pg 5 - 7
Disposable Consumables	Pg 8
Cleanroom Wipers	Pg 9
Cleanroom Consumable	Pg 10
Cleanroom Mop System	Pg 11
ESD Consumables	Pg 12
Finger Cot	Pg 13-15
MEGA ESD Equipment	Pg 16
MEGA Tweezers	Pg 17
MEGA ESD Brushes	Pg 18
ESD Containers	Pg 19
MEGA Cleanroom & ESD Stationery	Pg 20
MEGA ESD Bottles	Pg 21
MEGA SMT Magazine Rack & Trolley	Pg 22-23
MEGA Packaging	Pg 24
Inspection Microscope, Optical Devices & Accessories	Pg 25-26
Metrology Tools & Systems	Pg 27
Material Testing, Analysis Tools & Metrology Devices	Pg 28-29
Rework Tools	Pg 29
Electrical & Electronics Devices	Pg 30
Video Measuring Machine – Auto Focus & Big Range Manual Measuring	Pg 31
Dry Ice Blaster	Pg 31
Co-ordinate Measuring Machine	Pg 32

Disposable Gloves



Nitrile Gloves



Latex Gloves



Vinyl Gloves



ESD Gloves



Plastic Gloves



Nylon Top
Fit Glove



Nylon Palm
Fit Gloves



Nylon, Cotton &
Polyester Glove

ESD Shoes



Mega EBS301



Mega ES304



Mega ES303



Mega ES305



Mega ES308



Mega ES408

Sizing

EU Size	35	36	38	39	40	42	45	44	46	48	50
US Size	2	3	4	5	6	7	8	9	10	11	12

Cleanroom Apparels



**ESD Jumpsuit
C/W Hood**



ESD Smock

Great Utopian S.B. offers a complete line of quality cleanroom apparels such as coveralls and smocks that are light-weight and comfortable, while offering specific characteristics necessary for Class 10 and above cleanroom activities – resist abrasion and chemicals, offer antistatic properties, furnish a safe barrier, provide particulate control, able to be decontaminated or sterilized.

Made from high grade synthetic materials, 100% polyester with continuous conductive filament yarns fabrics used for effective control of static dissipation.

Apparels are sewn according to proper cleanroom apparel's sewing methods where all exposed fabric edges are sealed with interlocking sewing systems and all joints double stitched with conductive treads to ensure durability and continuity of the static dissipative flow.

We offer a wide range of standard apparels design with properly monitored inventory to cater to any urgent request. We also offer custom made apparels to suit specific requirements and needs.

Cleanroom Apparel Design



Smock
Model: 100



Smock
Model: 107



Smock C/W
Hood Attached
Model: 101



Lab Coat
Model: 102



Jumpsuit
Model: 103



Jumpsuit C/W
Hood Attached
Model: 104

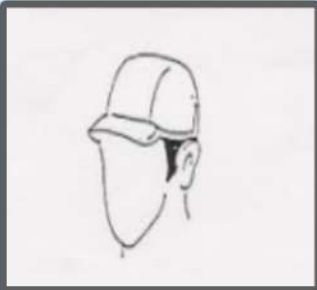


Jacket & Pants
Model: 105

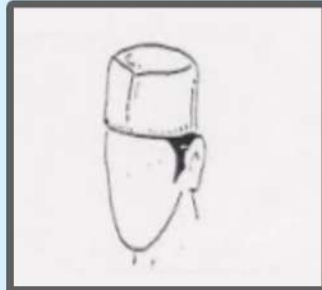


Lab Coat
Model: 106

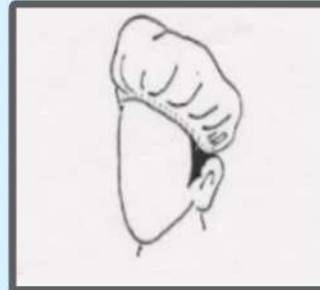
Cleanroom Apparel Design



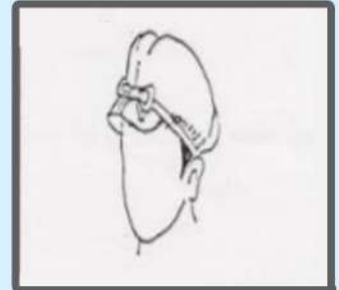
Cap
Model: 001



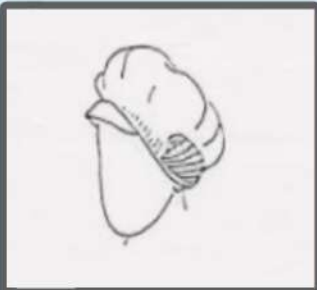
Cap
Model: 002



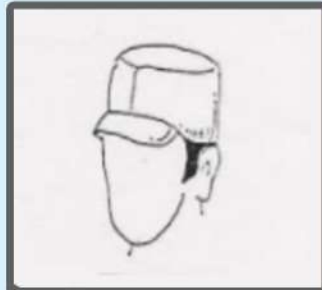
Cap
Model: 003



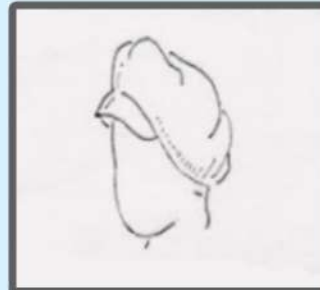
Cap
Model: 004



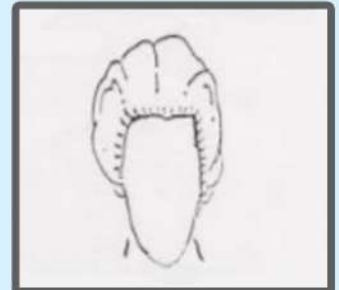
Cap C/W Ear Net
Model: 005



Cap
Model: 006



Cap
Model: 007



Cap
Model: 008



Hood
Model: 010



Hood C/W Ear Net
Model: 011



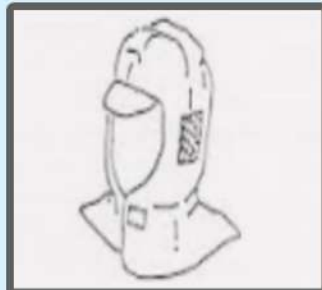
Hood
Model: 012



Hood C/W Ear Net
Model: 013



Hood
Model: 014



Hood C/W Ear Net
Model: 015



Cap
Model: 009



Cap
Model: 016